

TCS CHIEF II

Dual-Wand Performance High-Powered Cleaning

The CHIEF II is the flagship of the TCS line. Powered by the legendary Kohler 26.5 Command PRO engine, the high-performance blower provides all the flow you need for dual-wand performance.

The additional air flow and water capacity makes the CHIEF II an ideal choice for the serious restoration professional. For cleaning carpet and tile, or extracting water, a dual-wand configuration helps drastically reduce the time it takes to finish large jobs. Another feature is the 180,000 BTU propane heater that provides sizzle, even with both wands working at the same time.

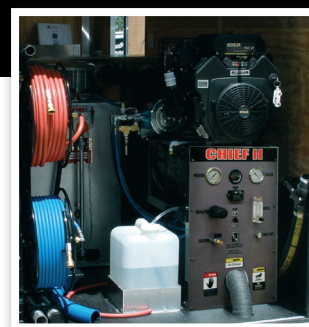


Specifications & Accessories

- 26.5 HP Kohler Command Pro EFI engine
- Sutorbilt™ 4L DSL vacuum blower @ 495 CFM
- General EPHT Series 1810S solution pump
- Little Giant 4HT XP heater @ 200+ degrees
- 250' vacuum hose w/ reel
- 250' pressure hose w/ live reel
- 150' supply hose w/ live reel
- 100 gallon custom recovery tank
- 55 gallon fresh water tank
- 2-jet stainless steel wand

**DOT approved fuel tap may be required.*

Package upgrade options on back.



KOHLER **EFI**
KOHLER PERFORMANCE ENGINEERING

simply
dependable

Truckmounts & Cleaning Solutions
5926 Goshen Springs Road
Norcross, GA 30071

www.truckmounts.com
800.981.2855

Chief II Truckmount Options & Upgrades



WE OFFER A VARIETY OF INSTALLATION OPTIONS

The TCS CHIEF II is designed to be installed in a 1-ton extended van. With a dry weight of almost 1,100 pounds, it's heavy but still smaller than other competitive systems on the market. TCS offers the best price and financing options for new vans.



Installation available for Chevrolet, Nissan, Ford & Dodge vans as well as box trucks and trailers. DOT approved tanks, auxiliary fuel tanks, and fuel tap kits are installed at TCS in Atlanta (additional distributors and vendors throughout the United States).

TCS can include a custom trailer with your truckmount purchase. Tandem axles, a flat front, and extra height make a TCS trailer an excellent choice for cleaners who already have a pickup truck or just want to save money on their first complete truckmount system.



Box Trucks are great options for companies that need to keep all their tools close at hand. If your box doesn't have a side door, the entire TCS CHIEF II system can fit along the side walls. Or TCS can have a side door professionally installed for you which will allow for more floor space.

LET US HELP YOU ACHIEVE THE RIGHT TRUCKMOUNT INSTALLATION OPTIONS FOR YOU

Tools & Accessories



ELECTRIC HOSE REEL



CHEMICAL SHELF



STAIR TOOL



INLINE FILTER



AIR SCRUBBERS & DEHUMIDIFIERS



URINE DETECTION LIGHT



INJECTION SPRAYER



- PUMP UP SPRAYERS
- WAND DETAIL TOOLS
- CARPET GROOMING RAKES
- EXTRACTION TOOLS
- OZONE MACHINE
- HOT FOGGER
- PURE MIST FOGGER
- BLOCKS/CARPET TABS
- SHOE COVERS
- COVERALLS
- UTILITY BRUSHES



WESTPAK HARD SURFACE
14" WAND



HYDRO-FORCE
GEKKO



HYDRO-FORCE
SX SERIES



ROTOVAC
360i



ROTOVAC
POWERWAND



ROTOVAC
360XL



Product availability maybe subject to change.